

annual review 2018

community of care



supporting children and young people with cancer

redkite 





contents

00

INTRODUCTION

From our Chairman and CEO	4
Our vision	6
Supporting families in 2018	8

01

CARE IN EVERY COMMUNITY

Cancer in our communities	10
Support packs at diagnosis	12
Financial assistance	14
Counselling and emotional support in hospitals	16
Music therapy in hospital	18
Education and career support	20
Emotional support across Australia	22
Support through bereavement	24
Information and resources	25

02

OUR COMMUNITY OF SUPPORTERS

Redkite's caring community donated over \$12.2m.....	26
Premier Partner: Coles	28
Leading corporate partners	30
Major corporate partners	31
Supporting Partners and Key supporters	32
Celebrating amazing milestones in 2018	33
Philanthropists in our community of care	34
Philanthropy makes a difference	35

03

COMMITTED COMMUNITIES AND STRONG GOVERNANCE

Financial highlights from 2018	36
Our Board	38
Governance and regulation	40
Senior Executive Team	41
2018 financials	42
Our community of fundraisers and volunteers	46

a message from our Chairman



Jen Horrigan

Chairman of the Redkite Board

Welcome to Redkite's 2018 Annual Review. This review profiles the contributions and achievements of our generous and caring community in 2018. This community of our donors, partners, volunteers, sector collaborators and Redkite's team of professionals all work tirelessly to give children and young people with cancer and their families the support they need at a critical time.

Together, we ensured quality support to more than 2,500 families and delivered the essential services that families tell us are most needed when facing their child's cancer.

Thousands of families rely on the broad range of services we deliver. Redkite is Australia's largest non-government provider of in-hospital social work and music therapy. We also provide financial assistance for families living with a child or young person's cancer. Families tell us how important it is to have Redkite with them at diagnosis, throughout treatment and when they return home.

Our tailored education and career support is the only national program of its kind, teaching essential skills and inspiring young cancer patients and survivors to dream big. For families who face the unimaginable loss of their child, our bereavement support from professionals who understand cancer, is so important.

We remain impatient to ensure we reach all of those children and young people and their families who are not currently supported by Redkite.

The key to ensuring the sustainability of our essential services is ongoing funding, combined with efficient and innovative operations. In 2018, we focused on building our individual donor base. We are already seeing strong results from this work and have welcomed many new donors to our caring community.

Overall, the contributions from partners and donors increased by 3% in 2018. This support was gratefully received and enabled us to deliver an 11% increase in family services compared with 2017.

We continue to deliver trusted and quality information to families through Cancer Advisor, Redkite's online information hub which we piloted in 2017 (www.canceradvisor.org.au). Cancer Advisor was developed in response to feedback from families saying how overwhelming it is to navigate and find reliable information. Cancer Advisor gathers content from trusted sources including oncologists, researchers and health professionals.

In 2018, we responded to an unprecedented demand for our Financial Assistance Program, providing \$2.15 million in financial assistance to cover families' essential household expenses at a time that their income is significantly reduced during their child's treatment. This was a 10% increase on financial assistance provided in 2017.

As Chairman I have the great privilege of working with Redkite's talented and committed team and Board of Directors. This past year has been Monique Keighery's first year as CEO and I want to acknowledge the vision, leadership and energy she brings to the role. In May 2018, Bruce Morgan completed his three-year term as Chairman. The Board of Directors and I warmly thank Bruce for his impact and dedication, and we look forward to his continuing contribution as a Board member and part of the caring Redkite community.

Finally, if you are new to Redkite's Community of Care or a long-standing supporter – thank you for your generosity and I hope you enjoy reflecting on all we achieved together in 2018.

a message from our CEO

Monique Keighery CEO of Redkite

Every day I am inspired by the practical and very real nature of Redkite's supportive care and by the energy and compassion of the Redkite community. This is a community of donors, partners and volunteers who ensure help where it's needed most – whether it's petrol in the car so a mum can get her child to hospital, or counselling at the hospital bedside at a time of uncertainty and despair. Our support is practical and at the coalface, and our generous community knows it means so much to the young lives and families we care about.

In 2018, we celebrated incredible milestones with some of our long-term treasured corporate partners, providing the opportunity to reflect on how much we have, and can, achieve together. Thanks to them and other generous donors, our focus over the past decade has been bridging gaps in critical cancer support for young people and their families. This has included developing programs to ensure assistance didn't fall away for families once they left hospital, as feelings of isolation and challenge upon returning home is a common and ongoing theme.

The continued growth of our community-based services is ensuring accessible counselling and support is available outside of hospital for these families. This is particularly important for the one in four families we help who are from regional or remote areas in Australia, and also for bereaved families. Our establishment six years ago of the nationally available education and career support for young people with cancer, and the reliable and trusted information delivered through Cancer Advisor, are also responses to the gaps in support and are having a real impact. It's hard to imagine that these services, which so many families rely on today, were once not available.



I'm proud that Redkite is not an organisation that stands still. Even with these services in place, we continued in 2018 to evaluate, innovate and adapt to ensure we meet families' needs and deliver our programs effectively and efficiently. Of course, we did not do this alone. In addition to support from our generous donors in 2018, we were grateful for the guidance received from our community of family advisors, 'Kite Connectors', and were proud to share our learnings and seek insights from sector collaborators in Australia and overseas.

Many people comment on the calibre of Redkite's Board, and I can share that it is a privilege to work with such successful and experienced Directors. They are also authentic, passionate and generous individuals who volunteer their time throughout the year. We see them as an extended part of Redkite's talented and hardworking team.

No matter who we are, our quality of life relies on fundamental essentials – financial stability, emotional wellbeing and access to education and employment options. At Redkite we have more yet to do to ensure cancer does not rob families or young lives of these supports. I can think of no community more caring, more capable of creating transformational change, or more dedicated to reach our goal of ensuring critical support and quality of life for children and young people with cancer.

Thank you to each and every one of you.

Our vision

***to support every child, teenager
and young adult with cancer, and their
family, who need us.***



our purpose

To provide essential support to children, teenagers and young adults with cancer to ensure the best possible quality of life for them and their family – now and into the future.

our promise to families

You are not alone with cancer. We will listen to you and your family, and give you the practical support you need for your whole cancer journey.

we believe

We believe the best way to support a child or young person with cancer is to support their whole family. We believe in walking alongside them from their diagnosis, throughout treatment and after they return home. We believe in equity and that no family facing cancer should be disadvantaged by their socioeconomic circumstances. We believe in collaboration and ensuring that all who engage with Redkite feel valued, connected and supported.

our community of care

It takes a caring community to ensure children and young people with cancer and their families have the support they need. Redkite's generous donors, volunteers, hospital and charity partners and team of caring professionals are all crucial to ensuring families have the support they need.

supporting families in 2018

Cancer can happen to any family at any time. Every day in Australia, five children or young people are diagnosed with cancer. They can face years of treatment – turning life upside down for them and their families. Redkite is there for families every step of the way.



Throughout 2018, Redkite supported an incredible

15%

more families than in 2017



Reliable and trustworthy information was accessed by nearly

17,000

people on Cancer Advisor



976

children and young people were helped to keep up with work and study with education grants, scholarships and expert advice



7%

more families received the essential financial support they needed to cover bills and expenses than in 2017



6,400

information, support and counselling sessions provided directly to diagnosed children and young people, their family and support networks



72

bereavement support packs were given to those who experienced the death of a loved one from cancer in 2018

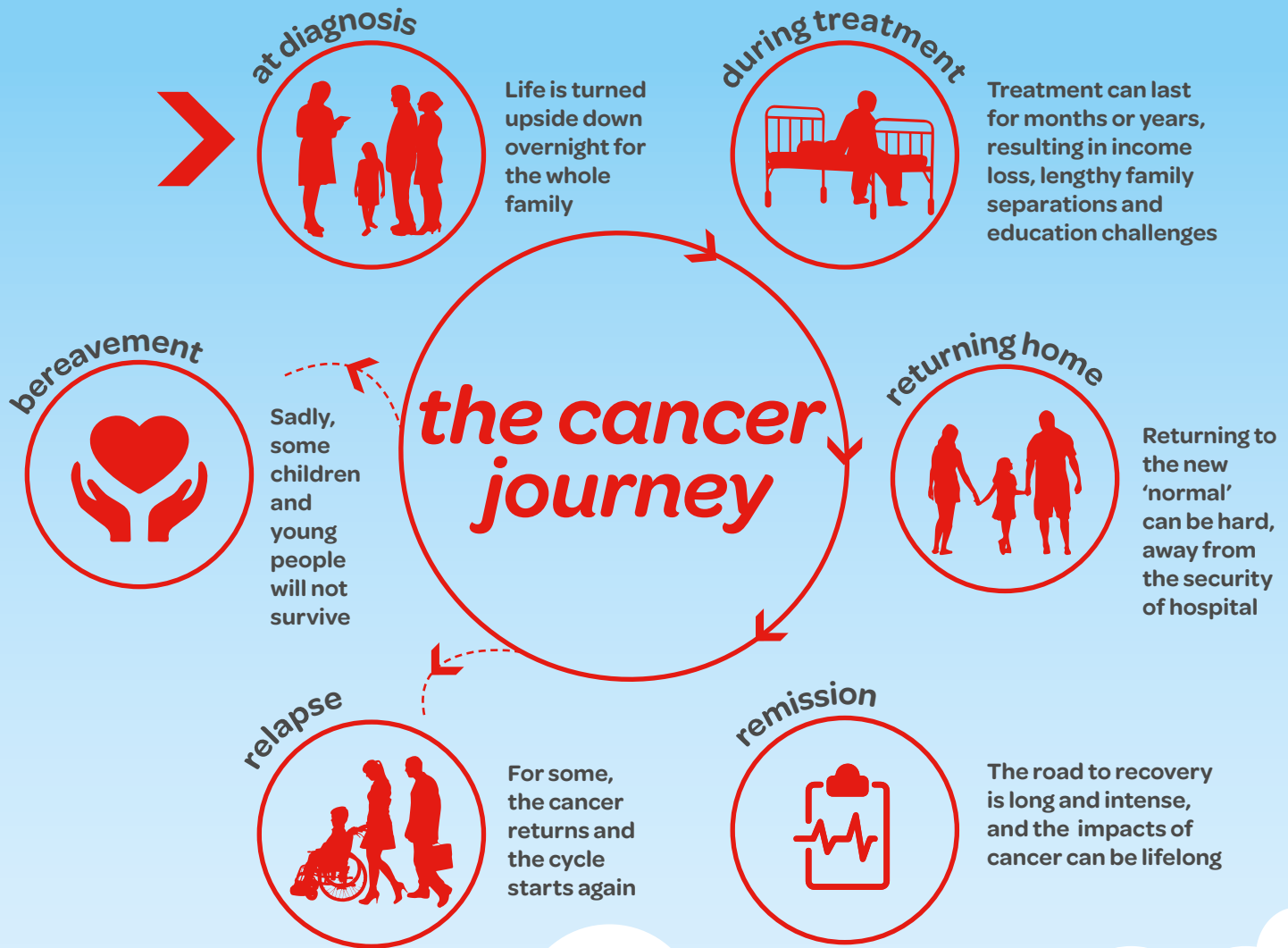
"From the moment of diagnosis, you're in shock. During the whole entire journey, you're so concerned all the time. It's a roller coaster ride of emotion with so many ups and downs, it's so mentally draining to have to watch your child go through all this. We'd never done this before, we were clueless in how to navigate through it. That's when our Redkite Social Worker came in and said; "We're here to support you, we're here to help."

- Vanie, mother to Bella, diagnosed at four years old

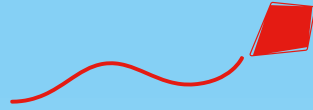


cancer in our communities

Redkite provides essential support to children and young people with cancer, up to the age of 24, and their families.



CHAPTER 1



care in every community

Cancer treatment lasts for months or years, and its impacts can last a lifetime. It's a devastating experience that challenges every aspect of a family's life. We are there for children and young people with cancer, as well as their mums, dads, siblings and grandparents, welcoming them into our community of care.

support packs at diagnosis

Redkite's Red Bags and Diagnosis Support Packs are given to those who have recently been diagnosed with cancer. These bags have been packed with care by our community of supporters and contain practical, emotional and informational support and all the essential items needed for an unexpected and potentially long-term stay in the hospital.

When a Redkite Social Worker handed Jill a Red Bag of must-haves for both Huon and herself, she said:

"It had exactly what we needed and we used it all. It felt so good to know that someone understood and cared."

- Jill (pictured) mother to Huon who was diagnosed at six weeks old



616

Red Bags distributed
to children in cancer
wards in 2018



434

Diagnosis Support Packs for teenagers
and young adults distributed in adult
hospitals across Australia

Red Bags for children under 15-years-old

"We received our bag when our daughter was diagnosed with leukemia. It meant so much to us. Not just the contents (which were amazing and thoughtful) but the bag itself became an identifier or badge so to speak."

TOILETRIES

"It may seem like a small thing to receive toiletries, but in a moment of monumental anxiety and fear, it helped."



TEDDY BEAR

"My little boy loved his teddy and it hasn't left his side since."



BLANKET

"I especially love the blanket, in fact not a day goes by where I don't use it."



KEEP CUP

"We loved being able to have a warm comforting drink in hospital with our Redkite cup."

Diagnosis Support Packs for teenagers and young people, aged 15 to 24-years-old

"The bag has been extremely useful as it is all mine ... in a place where everything else belongs to everyone else. It's empowering in a very disempowering environment."

EYE MASK

"Keeps out the bright hospital lights to get some rest."



ACTIVITY BOOK

"It helped to keep busy while waiting for test results to come back."



THERMOMETER

"The detection of a sudden spike in temperature can be life saving."



HEADPHONES

"Helping to block out noises of the hospital."

financial assistance

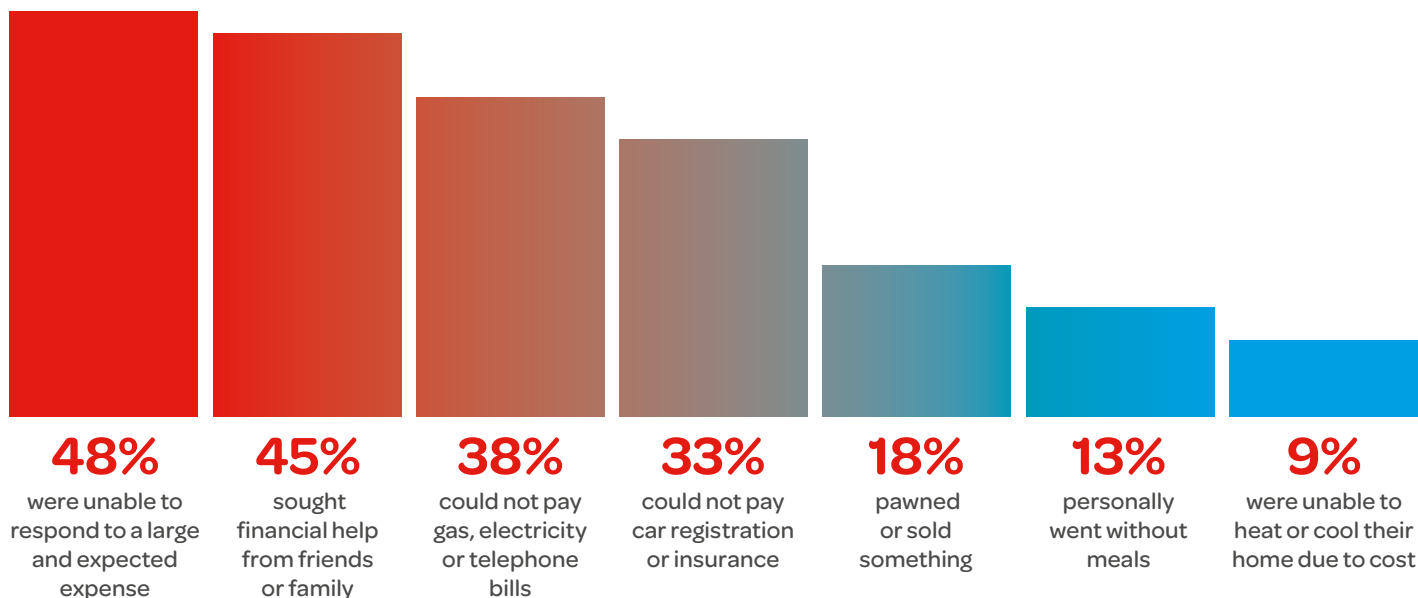
Cancer is expensive. Treatment can put pressure on finances. When one parent must stop work to care for their sick child in hospital, bills can be crippling. Redkite relieves the financial pressure by covering the cost of household utility bills, keeping food on the table, and assisting with rent and mortgage payments and other essentials.

“Redkite’s financial support meant I could be by Bella’s bedside 24/7 while she was on treatment for months on end. Our lives were at a standstill, but we still had bills to attend to, including our mortgage. With only my husband’s income to live on, we were fortunate that Redkite was there to ease the financial pressures during the most difficult phases of her treatment.”

- Vanie, mother of Bella (pictured right) who was diagnosed at age four



In 2018, Redkite continued listening to families and reviewing how we support children and young people with cancer financially. Our research gave profound insight into the financial impact on families when a child or young person has cancer.



In 2018:

7%
more families were supported financially

47%
of the families supported in 2018 had not previously had financial assistance from Redkite

Overall in 2018 there was a

10%
increase in financial assistance to help cover essential costs for families and young people facing cancer

For single parent families, the cancer journey can be even more difficult:

23%
of single-parent households personally went without meals compared to 13% of all households where a child had cancer

29%
of single-parent households pawned or sold assets versus 18% of all households where a child had cancer

counselling and emotional support in hospital

Redkite funds more social workers in children's cancer wards than any other charity in Australia. These skilled professionals support families, offering practical advice and counselling at hospital bedsides across Australia.



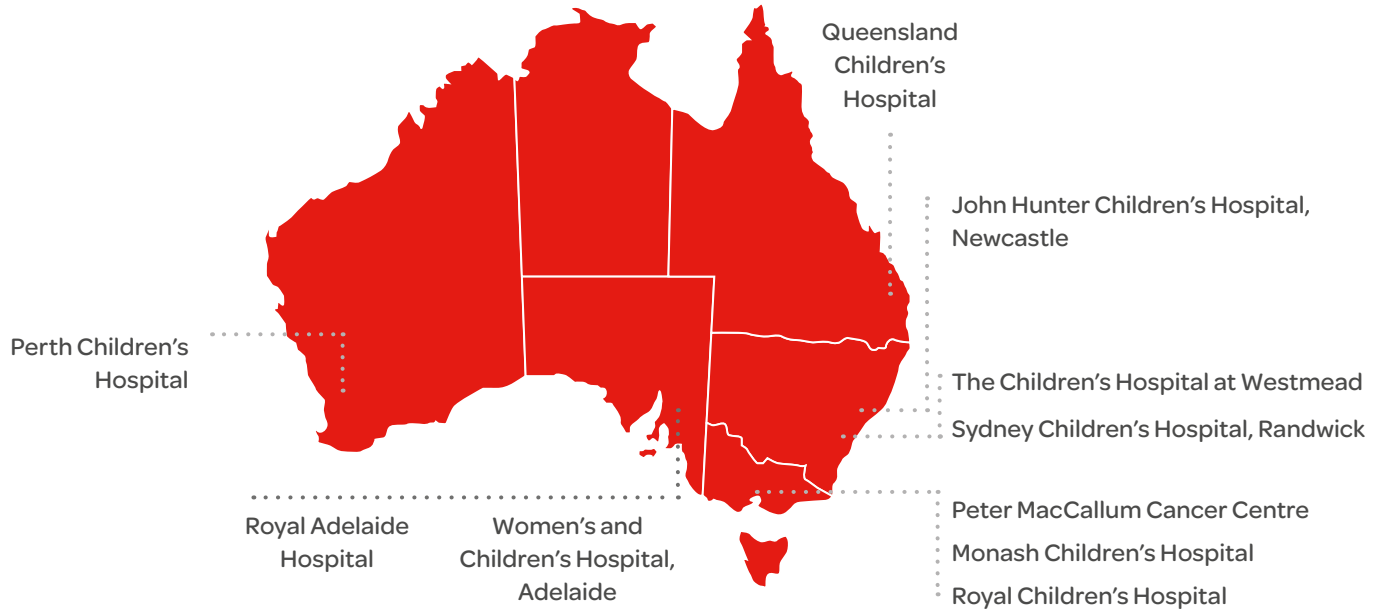
"I often have young people and their parents tell me how important and helpful social work support is, particularly at the beginning of their journey when they are reeling with shock over a cancer diagnosis. It's the practical assistance we can provide that takes the load off the family and allows them to focus on the young person's health and wellbeing."

- Mairghread Clarke, Redkite Social Worker based in the Peter MacCallum Cancer Centre



Redkite funds more social workers in Australia's children's cancer wards than any other charity.

hospitals and treatment centres with Redkite Social Workers and Music Therapists



"I was watching my child go through hell and I was terrified for my grandchild. The hospital social worker once said to me, "For grandparents it's a double whammy'. It's so true - it's so big for grandparents."

- Margie (pictured right), grandmother to David



music therapy in hospitals

Redkite Music Therapists help children manage their pain and build their self-confidence.

What parents say about Redkite Music Therapy:

"My daughter greatly benefited from music therapy and so did I in many ways. She and I relaxed during music therapy, we laughed, shared stories, made up stories, built on skills, were distracted from pain, anxiety, isolation."

"Learning an instrument gave our daughter something to focus on other than treatment."

"The music therapist made a horrible place seem beautiful. I think he must be magical."

"Music therapy helped my son a great deal during treatment and was probably the most valuable non-medical support we received. I credit the music therapy with helping my son to keep his spirits up during his treatment and he has been left with extremely fond memories of his time with the therapist."

"Music therapy was a beautiful distraction during a dark and painful time for her."

Music therapy makes a difference:

- Helps minimise pain and anxiety
- Helps children cope during the uncertainties of cancer
- Gives children confidence to tackle what's ahead of them
- Helps children express themselves through music
- Gives families the chance to connect and create special memories
- Increases resilience to get through the discomfort of treatment

In 2018, Redkite's Music Therapists contributed to the improved wellbeing for children and young people:

69%
felt less anxiety during procedures

77%
felt less alone

79%
felt relaxed

"Music therapy uses our knowledge of how music can positively affect people to assist in supporting oncology families as needed throughout treatment."

- Miriam, Redkite Music Therapist



education and career support

Cancer treatment can mean months or years of disruption to education, training or work. Redkite's Education and Career Support Program helps children, teenagers and young adults build their best possible futures.

In 2018 you enabled:



Education and career support to around

980

children, teenagers and young adults



56

Redkite and Coles Dare to Dream Scholarships for teenagers and young people to achieve their goals



428

grants to help cover education costs such as tutoring



3,313

education and career support sessions run by Redkite specialists to help young people identify their goals and build strategies to reach them

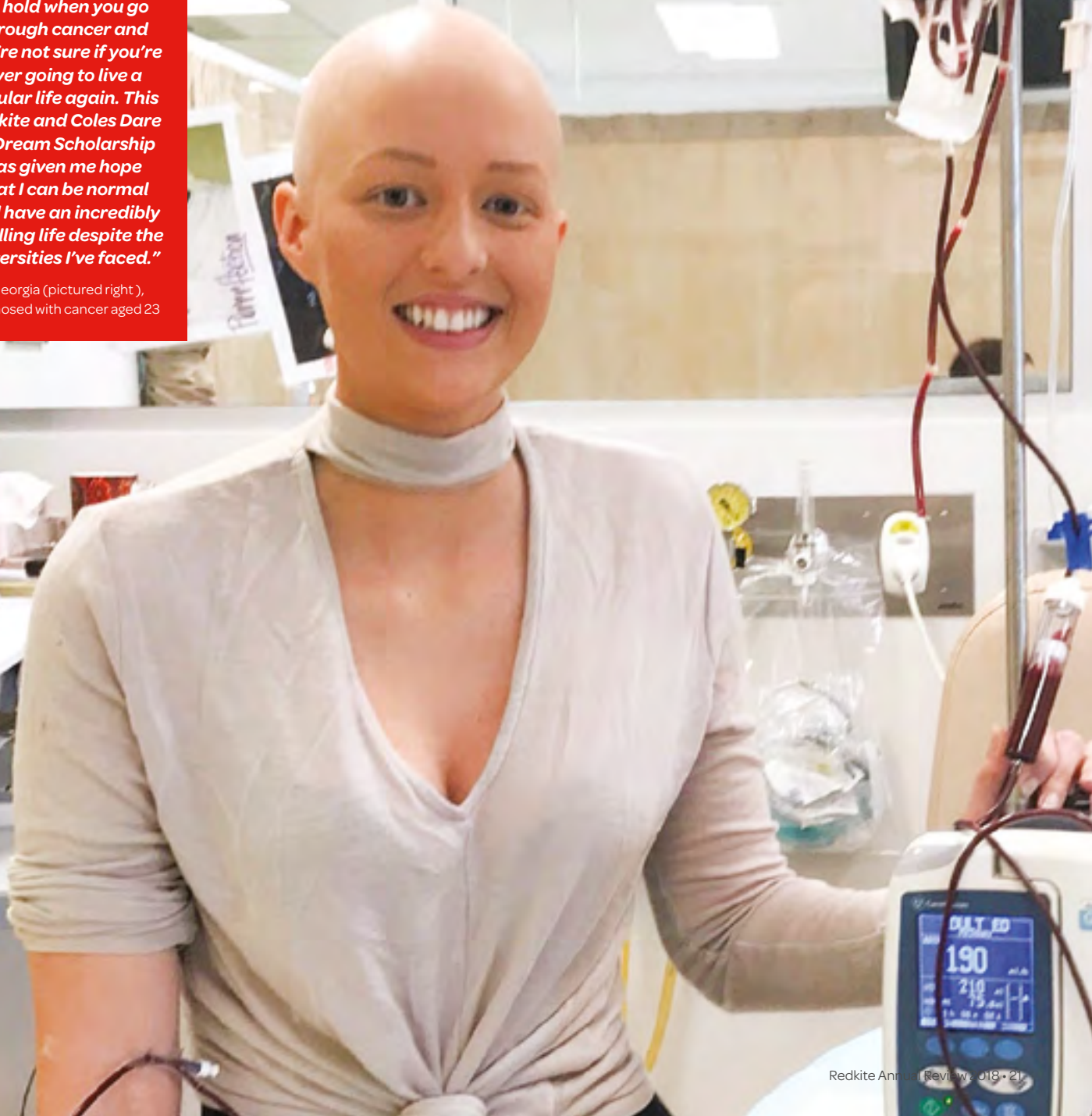
"Sophie missed a whole year of school, due to her treatment, and one of her biggest concerns was that she wanted to stay with her friends and didn't want to repeat a year of school. We were very lucky because Redkite funded two terms of tutoring for Sophie and this meant she could still progress with her peers and get on with being a kid. There's not a much bigger gift you can give a child."

- Christine, mum to Sophie (pictured left)



"Everything is put on hold when you go through cancer and you're not sure if you're ever going to live a regular life again. This Redkite and Coles Dare to Dream Scholarship has given me hope that I can be normal and have an incredibly fulfilling life despite the adversities I've faced."

- Georgia (pictured right),
diagnosed with cancer aged 23



emotional support across Australia

Redkite's Social Workers and Information Officers support each family by taking into consideration their strengths, support network and unique challenges. Critical emotional support as well as helpful and accurate information is available to families by email, telephone or face-to-face, ensuring they have support no matter where they are in Australia.



“Redkite was there to help lessen the burden of cancer. This has made me confident that there are no challenges in my future that I cannot overcome. More importantly, there are no challenges I have to face alone.”

-Adry (pictured), diagnosed with cancer at age 17

Highlights in community-based support in 2018:



More young people were supported

We helped 21% more teenagers and young adults with counselling and information support than in 2017.



More individuals were supported

We supported over 1,600 people. Our team helped young people who had been diagnosed, their family members and also the professionals in their network such as teachers and doctors.



Reaching families everywhere

Of those we supported, 22% were living in remote or regional areas. We make sure those families have the right support when they need it, keeping them connected, providing them with the cancer-specific, and age-appropriate support they need and ensuring they're not disadvantaged by location.



Understanding that family looks different to everyone

In 2018, we spoke with mothers, fathers, teachers, siblings, grandparents, aunts, uncles, partners, friends, cousins and others in a family's support network.

"We focus our support around the needs of the individual; it's not a cookie-cutter approach. There's one parent I regularly speak to and he calls me every week while he's making dinner. Our support lines are open five days a week and we get calls from parents and young people with cancer, as well as school teachers, family, friends and other members of the community."

- Rachael, Redkite Community-Based Social Worker

In 2018, our community-based social work team provided:



6,400

information, support and counselling sessions directly to diagnosed children and young people, their family and support networks



Around

1,700

hours working directly with diagnosed children and young people, their family and support networks



Around

1,300

hours indirectly supporting clients, e.g. by completing complicated forms on their behalf, researching treatment options, placing medical referrals and reviewing documentation

support through bereavement

When a child or young person with cancer dies, Redkite is there for their family, for as long as we're needed.



Redkite holds regular phone-based support groups for bereaved parents, facilitated by our experienced social workers. These groups are an opportunity to connect with others, share experiences and talk about ways to cope. Groups are available for parents whose child has died recently and for those who have been bereaved for a longer time.



Redkite can help cover funeral costs and other expenses during times of financial need in the year after bereavement.



Redkite also offers a bereavement support pack for those who have recently experienced the death of a loved one from cancer. The pack includes three books exploring themes of grief and loss, a memory candle, and information about Redkite's ongoing information and counselling services for bereaved families.



In 2018, 72 packs were distributed. Around 8% of our financial support went towards providing assistance for funeral costs and counselling for families of children and young people who have died.



After Brooke's death, Karl (pictured with Brooke) received emotional support from a Redkite Social Worker.

"I was initially too proud to ask for help. I thought I could deal with things myself. I'm so glad I got the help I did."

information and resources

Finding out that a child, teenager or young adult has cancer can be frightening, isolating and overwhelming. For many, the journey starts with seeking trustworthy and reliable information. Cancer Advisor is an online platform where young people and families can find answers to questions and learn from the experiences of others who have been there before.

building our online community with Cancer Advisor

In 2018, nearly 17,000 individual users accessed Redkite's new online information hub, Cancer Advisor. By the end of December 2018, Cancer Advisor contained over 1,000 pieces of content and there were over 370 registered users of the site.



In 2018:

21%

more teenagers and young people, aged 15-24, accessed Redkite's critical information, emotional support and counselling than the previous year



Nell, a Sydney-based nurse, chose Cancer Advisor to help share the information booklet she developed after her own cancer experience: ***Battle Weapons: A coping guide for young people facing cancer.***

"I was enjoying an independent life when I was diagnosed with non-Hodgkin lymphoma in 2013. 'Battle Weapons' is a guide filled with the information I have discovered and used along my cancer journey. I hope it makes a difference in some small way."

Redkite's caring community donated over

\$12.2m

to help families with household bills, give professional counselling, information and support, and help young people plan for their futures.

\$161,115

commercial value of
volunteer hours

\$1.3m

raised at the
Redkite Corporate Quiz

\$700k
donated by
staff through
their work
payroll

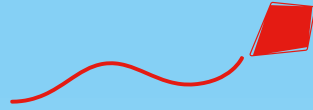
586
volunteers

\$455,000

raised by grassroots community
fundraisers

5,720
volunteer
hours

CHAPTER 2



our community of supporters

Redkite doesn't receive any government funding. Without the support of our generous donors, community fundraisers, volunteers and corporate supporters we wouldn't be able to provide our services. Thank you for being a part of our community of care and going above and beyond for children and young people facing cancer.

premier partner: Coles

In 2018, the innovative Redkite and Coles partnership entered its sixth year. We celebrated an incredible milestone, \$30 million raised by the dedicated Coles team since 2013, and we're delighted to welcome Coles Express to the partnership.



Coles Fresh Food Ambassador Curtis Stone, Redkite CEO Monique Keighery and Coles Group CEO Steven Cain celebrating the launch of the Coles Christmas range.

In 2018, Coles raised over

\$4.7m

Between January 2013 and December 2018 Coles generously funded:



86,180

hours of counselling and support across Australia



10,227

hours of music therapy



2,313

scholarships and education grants



37,690

household bills



Coles generously continued to donate 5c from every specially marked loaf of Coles branded bread and, during Easter, 20c from every pack of award-winning Coles Hot Cross Buns towards supporting families. At Christmas, the team once again inspired their communities to buy \$2 donation cards. Gerry Gingerbread returned to stores with some yummy friends and a new merchandise range, with 20c from every product donated to Redkite.

leading corporate partners

Our Leading Partners make an outstanding contribution in support of young people and families, with Redkite embedded in their workplaces and team cultures. They continue to break new ground in how corporate organisations partner with charities.



COUNTRY ROAD



HERBERT
SMITH
FREEHILLS



Stockland
CARE
FOUNDATION

major corporate partners

Our Major Partners provide significant and valuable support for families facing cancer whether it be through team fundraising, client events, sponsorship, pro bono support, corporate donations or all of the above.



Supporting Partners and Key Supporters

No matter how big or small, our Supporting Partners are a critical part of our community of care, making a difference to families facing cancer every day.



PHOTO CREDIT: PHIL HILLYARD, THE DAILY TELEGRAPH



celebrating amazing milestones in 2018



In 2018, we also celebrated 10 years of partnership with some of our loyal and generous supporters, helping us to reach more families across Australia than ever before.



philanthropists in our community of care

The support of philanthropists has touched the lives of thousands of families across Australia. We deeply appreciate their personal commitment either through donations from family foundations or through individual gifts and legacies.

REDKITE FAMILY CIRCLE

KINGHORN FOUNDATION

REDKITE DISTINGUISHED
SUPPORTERS

HOOPER SHAW FOUNDATION **FLANNERY FOUNDATION** **HELEN
SEWELL AM PONTING FOUNDATION** **THYNE REID FOUNDATION**

REDKITE MAJOR
BENEFACTORS

THE ADOLPH BASSER TRUST AUSTRALIAN EXECUTOR TRUSTEES
DENTON FAMILY TRUST JENNIE AND IAN BAKER-FINCH **MICHAEL
MADIGAN** STAN PERRON CHARITABLE FOUNDATION

REDKITE VALUED
FRIENDS

ROBERT ALBERT AO **JOHN ANGUS M. ATTWOOD**
TESTAMENTARY TRUST **ATS CHARITABLE FOUNDATION** BRADY
CANCER SUPPORT FOUNDATION **BENCHMARK FOUNDATION**
WILLIAM CANT **CORIO FOUNDATION** C W CRITTENDEN SNR AND S
CRITTENDEN FAMILY LEGACY **ESTATE OF THE LATE PETER JOHN
JOYNSON** FARRELL FAMILY FOUNDATION **FEILMAN FOUNDATION**
GOLDEN STAVE FOUNDATION **GROSS FOUNDATION** G.W.
VOWELL FOUNDATION **JAMES N. KIRBY FOUNDATION** JOE WHITE
BEQUEST **J.P. STRATTON TRUST** THE KAREN AND JOHN KIGHTLEY
FOUNDATION **MR PETER LANGHAM** GEOFF AND NANETTE LORD
LORD MAYOR'S CHARITABLE TRUST SUSAN CRAIG MAPLE-
BROWN AM **THE MAJITHIA FAMILY** MASSEY CHARITABLE TRUST
MARIAN AND E.H. FLACK TRUST MR DARREN O'BRIEN **MS JOAN
O'REGAN** NORMAN, MAVIS AND GRAEME WATERS PERPETUAL
CHARITABLE TRUST **PIERCE ARMSTRONG FOUNDATION** ROBERT
AND STEPHANIE PROWSE **MR ANDREW RENNIE SAVANNAH
FOUNDATION** **WILLIAM ANGLISS (VICTORIA) CHARITABLE FUND**
YARRADALE STUD

philanthropy makes a difference

Below we showcase some of our philanthropic supporters who make a difference to the lives of children and young people with cancer.

Johanna Sewell Bequest Fund

“My daughter Johanna was just 17 when she was diagnosed with osteogenic sarcoma. It was 1988 and there was virtually no support of any kind for Jo, her siblings or me. While going through the trauma associated with diagnosis, treatment and finally the loss of our darling girl, I was determined that, if I were ever in a position to do so, I would help other families through the ordeal.” - Helen Sewell

Helen set up the Johanna Sewell Bequest Fund with extraordinary commitment to funding Redkite’s innovation and strategy to enable us to respond to the needs of families now and long into the future.



Ponting Foundation

“As the funder of Redkite’s Exceptional Needs Assistance Program, the Ponting Foundation is pleased to be able to help make the seemingly insurmountable become manageable. Cancer doesn’t discriminate and we know for some families, their child’s cancer diagnosis can come on top of already existing pressures and challenges. We are glad we can help Redkite be there for families and young people at this time.” - Rianna Ponting

We are deeply grateful to the Ponting Foundation for recognising the importance of supporting those families in exceptional circumstances since 2010.



The Kinghorn Foundation

The Kinghorn Foundation has been a visionary supporter, funding the vital growth of all our community-based services, with an additional tremendous passion for music therapy. As a part of Redkite’s Family Circle, we are deeply grateful to Jo and the Kinghorn family for their continued belief in the resilience of families and their enduring commitment to children and young people with cancer.



financial highlights from 2018



Administration costs kept to a minimum, at just

10%

of revenue, inclusive of the additional cost of Redkite's NSW office relocation



\$2.15m

in financial assistance provided to cover families' essential expenses, which was 10% more than in 2017



Over

\$8m

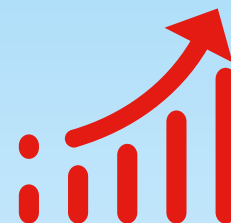
was spent directly on families in 2018 across all our essential support services, which was 11% more than in 2017



Fundraising costs were reduced by

7%

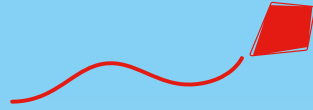
from 2017



Redkite's revenue increased by 3% from 2017, totalling

\$12.2m

CHAPTER 3



committed communities and strong governance

The commitment of our community and strong governance ensure that Redkite has the expertise to achieve our vision of supporting every child and young person with cancer, and their family, who needs us.

our Board



Jennifer Horrigan
Redkite Chairman

Elected Chairman in May of 2018, Jennifer brings 25 years experience across investment banking, financial communication and investor relations. Former Chief Operating Officer in Australia of the independent investment bank Greenhill, Jennifer is also a non-executive Director of APN Funds Management; Industria REIT (ASX: IDR), Convenience Retail REIT (CRR), QV Equities (ASX: QVE), Yarra Funds Management and Breast Cancer Trials. Jennifer's qualifications include Bachelor of Business, Graduate Diploma in Applied Finance (FINSIA) and Graduate Diploma Management (AGSM).



Bruce Morgan

Bruce joined the Redkite Board in 2013 and was Chairman from May 2015- May 2018. Former roles include Chairman of PriceWaterhouseCoopers and a partner of the firm for over 25 years. He is currently the Chairman of Sydney Water Corporation, a Director of Origin Energy, the University of NSW Foundation and the European Australian Business Council. He is also a Fellow of the Australian Institute of Company Directors and Chartered Accountants Australia and New Zealand.



Stephen Conry

Stephen is an International Director and Chief Executive Officer Australia of JLL, Australia's largest commercial property services firm. He commenced his career with JLL in 1982, while studying Property Economics (graduating in 1986). Stephen has served on various business and community boards and committees and is currently President of the Property Council of Australia, a Fellow of the Australian Property Institute, a Fellow of the Royal Institute of Chartered Surveyors, and a Fellow of the Australian Institute of Company Directors.



Joost de Kock

Joost is currently General Manager Enterprise Transformation with the Australian Government Department of Human Services and a former Partner and Managing Director of the Boston Consulting Group (Sydney and Canberra). For over two decades Joost has advised private and public sector clients on strategy, business model design and technology-driven transformation. Through personal experience, Joost has become passionate about helping children with cancer and their families, especially through innovative use of digital technology.



Teresa Engelhard

Teresa's 20 years of digital technology leadership includes VP Marketing, GM and CEO roles in Silicon Valley, strategy consulting at McKinsey and venture capital partner roles in the US and Australia. She currently serves as a Director for Origin Energy, WiseTech Global, Planet Innovation and StartupAUS. She has a Bachelor of Engineering and Applied Science from Caltech, an MBA from Stanford University and is a Graduate of the Australian Institute of Company Directors.

our patrons and alumni

Patrons

Mr Geoff Brunson AM
Mr John Buchanan
Professor Arthur Clark AM
Mr John Curro AM MBE
Dr Richard Divall OBE
Professor Henry Ekert AM

Dr Robert (Bob) Every AO
Mr Mark Johnson AO
Mr Chris Masters PSM
Ms Marina Prior
The Earl of Portarlington
Her Excellency the Honourable
Kerry Sanderson AO, Governor of
Western Australia (outgoing)

Ms Helen Sewell AM
Lady Valery Stephen
Dame Kiri Te Kanawa DBE
Mr Richard Tognetti AO
Mr Barry Tuckwell AC OBE
Mr David Williamson AO

Alumni

Clive Austin AM
Tania Baker
Ron Bennetts
James Bishop
Tony Collins
Robert Dalgleish



Dr Robert (Bob) Every AO

Dr Bob Every AO is a metallurgist by profession (Bachelor's Degree 1968 / Doctorate 1971). Bob is currently the Director of Gresham Partners Holdings Limited and Chairman of the WACA Foundation. Former roles include CEO of Steel & Tube Holdings Ltd NZ, MD & CEO of Tubemakers, President of BHP Steel, MD & CEO of OneSteel, Director of Cricket Australia, Chairman of Wesfarmers and Boral. Bob is also a Patron and past Chairman of Redkite. Bob has been awarded a Centenary Medal and an Order of Australia.



Sarah Goodman

Sarah has over 20 years' experience as a Company Director of large charities, not-for-profits and commercial enterprises. She also has over 20 years senior executive experience in risk management, governance and strategic regulatory policy, gained in four large financial services groups and in two Australian regulators. Sarah's qualifications include being a Graduate of the Australian Institute of Company Directors, and a Bachelor of Law (University of NSW).



Mark Rigotti

Mark is the Global CEO of Herbert Smith Freehills which involves him spending time and working with a wide range of diverse cultures and teams. Prior to this, Mark ran a leading corporate, capital markets and fundraising practice for 15 years spanning Australia and the United Kingdom. He is involved in many professional and community organisations and is a Director of the European Australia Business Council and a member of HSF Global Partnership Council.



Alex Scandurra

Alex Scandurra is an influential player in the start-up world as CEO of Stone & Chalk, an accelerator for start-ups seeking to disrupt the financial services sector. Alex is also the Founding Director of FinTech Australia and sits on the ASIC Digital Advisory Committee and the Advisory Board to the NSW Dept of Finance, Services and Innovation. A former Australian Army captain, graduate of the London Business School and Head of Strategic Partnerships & Barclays Accelerator Programs, Alex also has experience working on leading infrastructure projects for Nokia and Lend Lease.



Adam Spencer

Adam is one of Redkite's most high profile and dedicated Ambassadors. A much loved Australian radio and TV personality, Adam is also an Ambassador for Mathematics & Science at the University of Sydney, an international keynote speaker (TEDx), an in-demand MC and conference speaker, successful author and holds a Doctor of Science Honoris Causa, Edith Cowan University.

Peter Davies
John Durkan
Bunny Gardiner-Hill
Alan Good
David Gray
Neil Hackett
Roger Hamilton
Gabor Hernadi

David Hind
Jo Hind
Ron Hirsch
Kathy Hirschfeld
Shaun James
Lesley Koenig
Alison Lansley
Bill Lennon

John Levey
Sheila MacLennan
Neil Matthews
Mary McGowan
Jeff Mews
Dr Judith Mulholland
Robert Mulholland QC
Tony Newton

Hon Robert Nicholson AO
Dr Peter O'Regan
Mark Palmer
John Pickering
Professor Ross Pinkerton
Jeanne Rockey AM
Sue Rowell
Rosalind Smith

Grant Sparks
Owain Stone
Kevin Watson AM
Nicholas Yates

governance and regulation

Our Board and networks

Redkite is committed to:

- Actively seeking and utilising innovative solutions to improve service outcomes and organisational efficiency.
- Evaluating the effectiveness of our work, undertaking continual process improvement and building on past achievements.
- Delivering services and raising funds respectfully and with integrity.
- Being accountable to families who access our services and to Redkite's supporters.
- Listening to and collaborating with donors, sector stakeholders and the families who access Redkite services to ensure quality support is provided where it's needed most.
- Practising diversity, equity and inclusion as a foundation for all our work.
- Working closely with our donors, pro bono supporters and volunteers to keep operational costs to a minimum.
- Maintaining our positive, unified and professional culture.
- Creating a work environment that promotes Equal Employment Opportunity (EEO).
- Using Occupational Health and Safety (OHS) policies and procedures to uphold a safe working environment.

Board functions

- Review and approve Redkite's strategic plan and operating and capital budgets.
- Appoint, guide and assess Redkite's Chief Executive Officer.
- Ensure the integrity of internal controls, risk management and management information systems.
- Ensure appropriate delegations, policies and procedures and compliance with all relevant legislations and regulations.
- Ensure financial viability, solvency and sustainability.
- Advocate for Redkite.
- Ensure consultation and communication with all stakeholders regarding Redkite's operations and future direction.

Board Committees

The Board has established Board Committees to oversee particular aspects of Redkite's operations and administration. Each Board Committee operates under a charter approved by the Board.

These charters provide for external advisor members in addition to Director members and are reviewed annually and updated as necessary. The charters require that every committee includes at least one Director and that members have suitable qualifications for the role. Each committee reports back to the Board on their activities.

Remuneration Committee

- Ensures remuneration guidelines and policies are in place for the Chief Executive Officer, senior executives and staff, and monitors implementation.
- Comprised Bruce Morgan (Chair), Jennifer Horrigan and Sarah Goodman.
- The committee satisfied the requirement to meet at least once during the year.

Investment Committee

- Establishes and ensures appropriate investment and risk strategies for Redkite's general reserve fund, as well as the Johanna Sewell Bequest reserve fund, in conjunction with the Board and external professional advisors.
- Comprised Jennifer Horrigan (Chair), Joost de Kock and external advisors Don Stammer, Geoff Brunsdon and Helen Sewell.
- The committee satisfied the requirement to meet at least four times during the year.

Risk and Audit Committee

An enterprise risk management framework operates to enable the Board and management to continue identifying and managing key risks.

- Monitors and oversees Redkite's financial reporting, risk management and compliance programs.
- Comprised Sarah Goodman (Chair), Bruce Morgan and external professional advisor Jonathan Dooley.
- The committee satisfied the requirement to meet at least three times during the year.

Digital Steering Committee

The Redkite Digital Steering Committee was established by the Board on 12 December 2016.

The committee is authorised to:

- Seek any information it requires from any employee in order to meet its scope.
- Obtain, at Redkite's expense, external legal and professional advice upon approval of the

Chairman of the Board.

- Exercise delegated authority in accordance with the current Delegation of Authority Policy.
- Determine the frequency and duration of its meetings.

The committee on behalf of the Board exercises oversight of:

- Any digital expenditure approved by the Board.
- Project timelines and project critical path.
- Use of external consultants and third party providers.
- Tender processes associated with digital projects.
- Matters relating to content sharing arrangements with third parties.
- Matters that may require reference to the Board for endorsement or decision.
- Matters pertaining to ownership and intellectual property.
- Plans for ongoing maintenance and technical support for digital platforms.
- Any relevant legal requirements.

Ethical standards and Code of Conduct

Board members, senior executives, staff and volunteers are expected to comply with all relevant laws and the values of Redkite as determined by the Board. This requires they act with integrity, compassion, fairness, honesty and respect at all times when working with children, young people and families affected by cancer and also with colleagues, supporters and other stakeholders.

Regulation

Redkite holds all relevant registrations, authorities and endorsements in Australia to operate as a charity and believes all are current and in good standing namely:

- Registration with the Australian Charities and Not-For-Profits Commission as a charity (Registration no. 65104 710 787).
- Registration with the relevant fundraising authority in each State and Territory of Australia for the purposes of fundraising in that State or Territory.
- The endorsement of the Australia Taxation Office as a Deductible Gift Recipient (DGR) and endorsement for charity tax concessions in respect of income tax exemption, GST concessions and FBT exemption.

senior executive team 2019



Monique Keighery

Chief Executive Officer

Monique has over 20 years' experience working across the not-for-profit, corporate and government sectors in marketing, public relations, fundraising, event management and stakeholder communications. She was appointed Chief Executive Officer of Redkite in December 2017, having been with the organisation in leadership roles for over 11 years and instrumental in the charity's growth and development. Monique is passionate about her work at Redkite and innovating to better support families across Australia facing their children's cancer.



Kerrie Howard

General Manager, People and Culture

Kerrie joined Redkite in early 2019 with over 20 years' human resources experience across all generalist HR areas, with particular strengths in organisational development, growth and change. Her previous role was GM People & Culture at Facilities First Australia, with other commercial experience including roles at Spotless Group and Compass Group Australia. Kerrie has a people-centred approach and a deep passion for wellness and inclusion.



Rachael Clifford

General Manager, Finance

Rachael has been with Redkite for 11 years, notably leading major process improvement projects that have led the way for the not-for-profit sector, particularly with FinancialForce. She brings financial management experience from the corporate sector, and oversees all finance and operations across Redkite, including budget and business planning, reporting, systems and technology, risk management and compliance.



Nicole Schleicher

General Manager, National Services

Nicole joined Redkite in 2014, bringing over 20 years' senior management experience in major not-for-profit organisations. She oversaw the development of the innovative Cancer Advisor website in 2017, and is responsible for the development, delivery and quality of Redkite's services to families and health professionals across Australia. Nicole is also responsible for the organisation's Research, Evaluation and Innovation function.



Tatiana Issacs

General Manager, Fundraising

Tatiana's 15 years' experience in not-for-profit marketing and fundraising includes senior roles at the Australian Red Cross, National Heart Foundation and The Shepherd Centre. She brings to Redkite extensive experience leading significant income and net revenue growth, as well as successfully introducing new funding programs. Tatiana leads a high-performing team across all fundraising streams including individual giving and corporate partnerships.

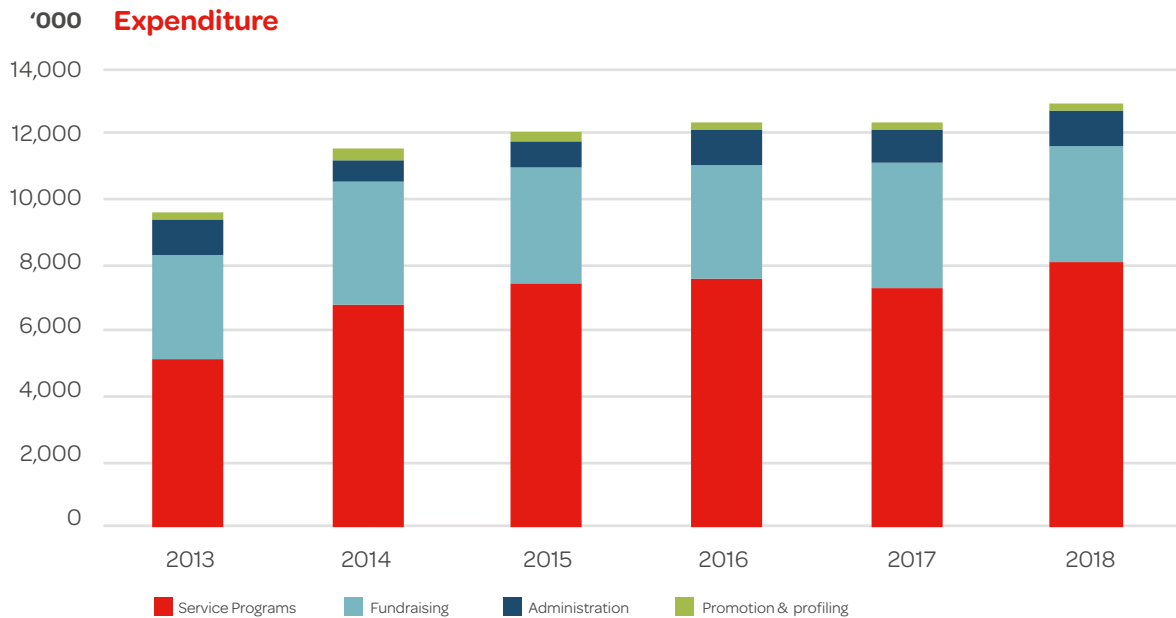
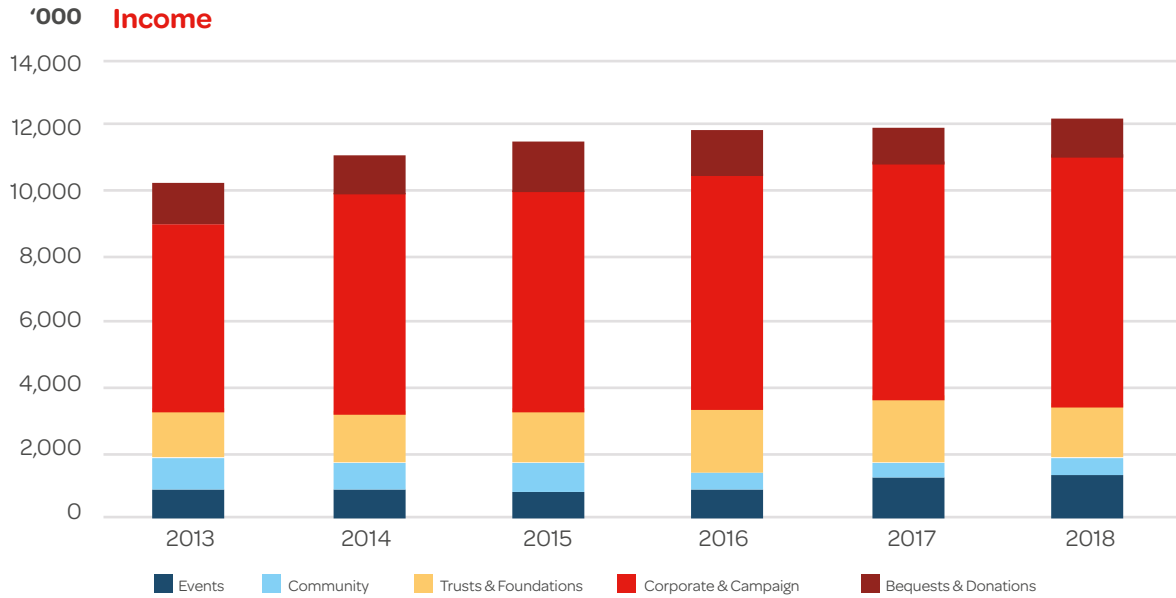
2018 financials

In 2018, Redkite's Community of Care supported 15% more families navigating the difficult cancer journey compared to 2017. This was achieved through an 11% increase in expenditure on our support programs. We distributed more funds via our Financial Assistance Program than any previous year, reaching 7% more families. Our Education and Career Support Program reached 13% more children and young people and development of our new online information hub, Cancer Advisor, continued throughout the year reaching nearly 17,000 individuals. Alongside this increased service delivery, we innovated to improve the efficiency of our Financial Assistance Program to ensure this growing and important program can continue to be relied on by families into the future.

Throughout the year our caring community rallied together and donated \$12.2M. This was a growth of 3% from the previous year, due largely to welcoming new individual donors to our community, the unprecedented generosity of guests at our fundraising events as well as the sustained and growing support from corporate partners including our Premier Partner, Coles.

In keeping with our commitment to efficient and lean operations, fundraising costs were kept to a minimum in 2018, while we still achieved growth in revenue. Additionally, our administration costs remained flat at 10% of revenue, despite the relocation of our NSW office necessitated by an end to our lease. This office move was greatly enabled by quality and generous pro bono support which Redkite actively seeks from our supporters.

We had a final net deficit of \$132,023, which was less than our budgeted deficit of \$192,000 and comfortably accommodated by our fundraising modelling for future growth.



Income Statement

	12 months to 31 December 2018	12 months to 31 December 2017
	\$	\$
Revenue from fundraising activities	11,842,615	11,532,015
Other revenue	606,394	519,106
Family grants and services provided	(8,098,886)	(7,297,368)
Fundraising costs	(442,502)	(430,637)
Employee expenses	(3,010,437)	(3,373,982)
Depreciation and amortisation	(45,314)	(43,886)
IT and communication expenses	(172,487)	(156,923)
Rent, property and insurance expenses	(427,357)	(368,369)
Other expenses	(384,048)	(340,326)
Net deficit from continuing activities	(132,023)	39,327

Notes to the accounts:

1) Redkite actively seeks opportunities for pro bono services and gifts in kind for all expenses: fundraising, services to children and families and administrative costs. These gifts are not reflected in the financial statements above. Approximately \$1.3m was received in pro bono services during 2018.

2) Revenue from fundraising activities includes revenue from events which is net of direct event revenue. Gross revenue from events was \$1,329,536 (\$1,220,530 in 2017) with costs of \$358,277 (\$348,643 in 2017).

3) Net loss on revaluation of investments for 2018 was -\$659,218 (\$608,121 in 2017) for a total comprehensive deficit of -\$791,241 (\$670,152 in 2017)

Balance Sheet

	As at 31 December 2018	As at 31 December 2017
	\$	\$
ASSETS		
Cash and cash equivalents	1,847,987	4,557,463
Receivables	319,774	255,698
Other	238,276	203,639
Total current assets	2,406,036	5,016,800
Plant and equipment	510,369	102,195
Financial assets	11,500,080	11,399,049
Non current assets	12,010,448	11,501,244
Total Assets	14,416,484	16,518,044
LIABILITIES		
Short term payables	1,795,313	1,439,260
Deferred revenue	4,085,505	5,818,488
Short term provision	322,806	267,188
Current liabilities	6,203,623	7,524,936
Long term provisions	48,894	37,899
Non current liabilities	48,894	37,899
Total liabilities	6,252,518	7,562,835
Net assets	8,163,966	8,955,208
Equity	8,163,966	8,955,208

Notes to the accounts:

1) Deferred revenue is specific purpose revenue received for agreed ongoing service delivery and development and is carried forward as per funding agreements with donors.

If you would like further information, full audited accounts are available on request.

our community of fundraisers and volunteers

Our support for families would not be possible without the individuals and groups that dedicate their time to raising funds and awareness for Redkite. We are so proud of our community. You are passionate, creative, generous and loyal, and you make a real difference.





GPS GOLD CHALLENGE TRIVIA NIGHT



NEW YORK CITY MARATHON RUNNERS FOR REDKITE



FOREVER FAN CLUB COMMUNITY MUSIC CONCERTS



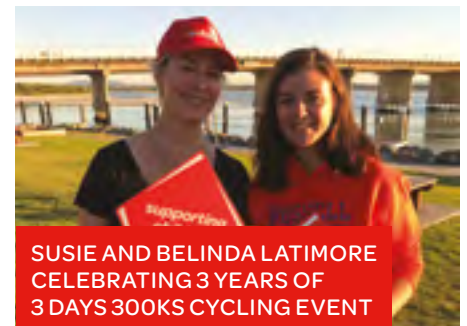
LACHLAN BEGG BEARD SHAVE



REDKITE CORPORATE QUIZ



DRY JULY



SUSIE AND BELINDA LATIMORE CELEBRATING 3 YEARS OF 3 DAYS 300KS CYCLING EVENT



CITY2SURF



LITHGOW LIGHTS CHRISTMAS FUNDRAISING

“Our son Josh was so proud to represent Redkite when he recovered from testicular cancer. His recognition of the amazing work they did for us during that period was beautiful to see. Following his tragic car accident, Redkite remain with us. We’re also very proud to walk in Josh’s footsteps and support Redkite as they support other families just like ours.”

- Helm family (JAMS)

