




# Redkite

For families facing  
childhood cancer



Chloe  
diagnosed with leukaemia at eleven  
months old, with the Redkite Red Bag

## IMPACT REPORT 2022

**Your support has made a meaningful impact!**







"I'D SAY THAT HAVING A KID WITH CANCER IS JUST THE WORST THING IN THE WORLD. OUR LIVES LITERALLY FELL APART. TO HAVE REDKITE THERE TO PICK UP THE PIECES FOR US WAS EXACTLY WHAT WE NEEDED. WE'RE JUST SO GRATEFUL. WE'LL FOREVER BE IN DEBT TO ORGANISATIONS LIKE REDKITE FOR THE SUPPORT YOU GAVE US BECAUSE WE HONESTLY COULDN'T HAVE DONE IT ON OUR OWN."

- Peter, Dad of Eli, who was diagnosed with a neuroblastoma at six-months old.



## Table of Contents

### 2022 Impact Report

Redkite's Vision	4
CEO Message	5
Redkite's Strategy	7
Redkite's Impact	9
Thank You to our Supporters	21
Lifetime Legacy	29
Message from Chair	30
Board of Directors	31

**REDKITE**

**FOR FAMILIES FACING  
CHILDHOOD CANCER**

#### Our Vision:

**A world where every family facing childhood cancer has the strength and support they need.**

When a family's life is shattered by childhood cancer, Redkite is there to help and has been for 40 years. We are a not-for-profit organisation that provides financial, emotional and practical support to families affected by childhood cancer because childhood cancer needs more than medicine. Our critical support services help families to survive through and beyond the cancer experience.

The 'red kite' is a lifeline for families to hold on to, a symbol of support and hope. The kite flies high in the face of challenges and reassures families that they can find the strength they need to take on childhood cancer, whatever that means for their family. Redkite is always by their side.

In 2022, Redkite generated \$12 million in revenue. Our programs and services are primarily funded by corporate partnerships, contributions from philanthropic donors, trusts, foundations and donations from the general public. We partner with allied health teams in all paediatric oncology units across the country and have well established relationships and partnerships with other local and national support providers. This includes the recently formed Child & Youth Cancer Alliance with Canteen and Camp Quality.



## Message from our CEO Monique Keighery

At Redkite, we believe every family should have the strength and support they need to take on the challenge of childhood cancer. There are currently thousands of families facing the impacts of their child's cancer, and they are the reason we continue to strive for better outcomes and drive innovative responses to increasing non-medical support needs. These children and families are the core of our community, alongside our generous supporters and donors, and I am proud of the impact we have made together in 2022.

I reflect on another challenging year, with additional pressures put on families from the lingering effects of the COVID-19 pandemic and rising costs of living, and am pleased to report that we significantly grew the reach and depth of our core services to help them. Our 2021 landmark report, *The Hidden Health Crisis: Children's cancer needs more than medicine*, identified key gaps in family support, and we launched a variety of initiatives in 2022 to address those gaps, including children's counselling and group support for diagnosed children and their siblings. The new group counselling program for siblings, 'Kite for Kids' brought together siblings to discuss various elements of their mental health such as self-esteem, difficulties they are facing and coping with "big feelings."

Partnerships are critical to our ongoing growth and success, and Redkite joined the Child and Youth Cancer Alliance in 2022 with Canteen and Camp Quality. Our teams are excited to work together with our collective expertise and resources to help children and families, and together we launched our first partnership delivered service called Cancer Hub. I also acknowledge and thank our other sector partners, and all the children's hospitals nationally, for our collaborative work in support of children with cancer no matter where they live in Australia.



We also see our donors and supporters as collaborators, and they allowed us to continue growing our support to help families whose lives have been shattered by cancer. We could not be more grateful to the individuals, major donors, partner organisations and bequestors who gave generously this year, and to all those who stepped up to increase their giving with the knowledge that families were doing it particularly tough. We are delighted to have resumed our in-person fundraising events after a two-year gap. The Redkite Quiz events, which are much loved by our supporters and friends, have brought us together to raise essential funds that support our critical services.

While I am concerned about current economic pressures and continued cost of living increases putting heightened pressure on Redkite families, the future is full of exciting and inspiring opportunities to have an even greater impact. I thank the Redkite community for ensuring we can continue to walk alongside the children and families, and that includes our exceptional Board of Directors who generously give their time to progress our mission and purpose, and the passionate and talented Redkite team.

- Monique Keighery, Redkite CEO

A handwritten signature of Monique Keighery in black ink.



Alfie diagnosed at three years old, with his mum, Jess.

**"THE FINANCIAL STRAIN WAS MASSIVE. WE WERE FOREVER BEHIND ON BILLS AND THE MORTGAGE. WE JUST COULDN'T SEE A LIGHT AT THE END OF THE TUNNEL. WITHOUT REDKITE'S FINANCIAL ASSISTANCE PROGRAM WE WOULDN'T HAVE SURVIVED. IT HONESTLY GAVE US INCREDIBLE PEACE OF MIND TO KNOW THAT REDKITE WAS THERE TO SUPPORT US."**

- Jess, Alfie's mum.

Jess's son, Alfie was diagnosed with a rare retinoblastoma in February 2020 when he was three years old. The family lived in Mackay and travelled over 920km to Brisbane for Alfie's treatment. Seven months into Alfie's treatment, Alfie's dad was made redundant. At the same time as their expenses were piling up, the family had no income at all. Redkite was there to support Alfie's family with financial assistance, group support and the Red Bag diagnosis support pack.

# Redkite's Strategy

## No family should face childhood cancer alone

Redkite is the only national charity in Australia that focuses on the psychosocial needs of all children with cancer and their families. We offer financial, emotional and practical support to help families take on the challenge of childhood cancer.

Redkite's landmark report, *The Hidden Health Crisis: Childhood cancer needs more than medicine*, revealed that despite our record impact in recent times, there are serious gaps in support for families throughout their cancer experience. An estimated 10,000 mums, dads, diagnosed children and siblings are still not getting the emotional and mental health support they need to cope with the trauma of childhood cancer.

Every Australian child diagnosed with cancer, and their family, deserves to be fully supported throughout their journey. It will take a seismic shift in outreach, upscaling of existing non-medical services and the development of new support systems to fill those gaps and improve accessibility across the country.

Redkite has a visionary blueprint to achieve this. We have a measured and strategic response to fulfil those needs, look after our stakeholders, and maintain existing services.



### Our Vision

A world where every family facing childhood cancer has the strength and support they need.

### Focus Areas

There is a critical, interconnected relationship between Redkite's Impact, Revenue and Brand. Advances in each of these areas will multiply the positive outcomes for families and communities.



### Foundation Areas

Digital & Data	Partnerships	People
Improving Redkite's digital and data foundations will help us operate even more efficiently, effectively and transparently, while also expanding our reach, impact and support base	Collaborating with non-profit, public health, government and corporate partners enables us to do more. Together, we can further advance our shared mission and improve the lives of children and families	Investing in our people is essential for us to achieve greater outcomes, retain top talent and foster innovation. Being a great place to work will lead to favourable results and experiences for all

# Redkite's Impact

## Social Return on Investment

In November 2022, Redkite worked with Social Ventures Australia to conduct an independent forward looking study to estimate the current and future social and economic value that would be created through Redkite's strategic plan, services and activities.

The report has found that for every \$1 invested in Redkite, \$4 of social and economic value is created.

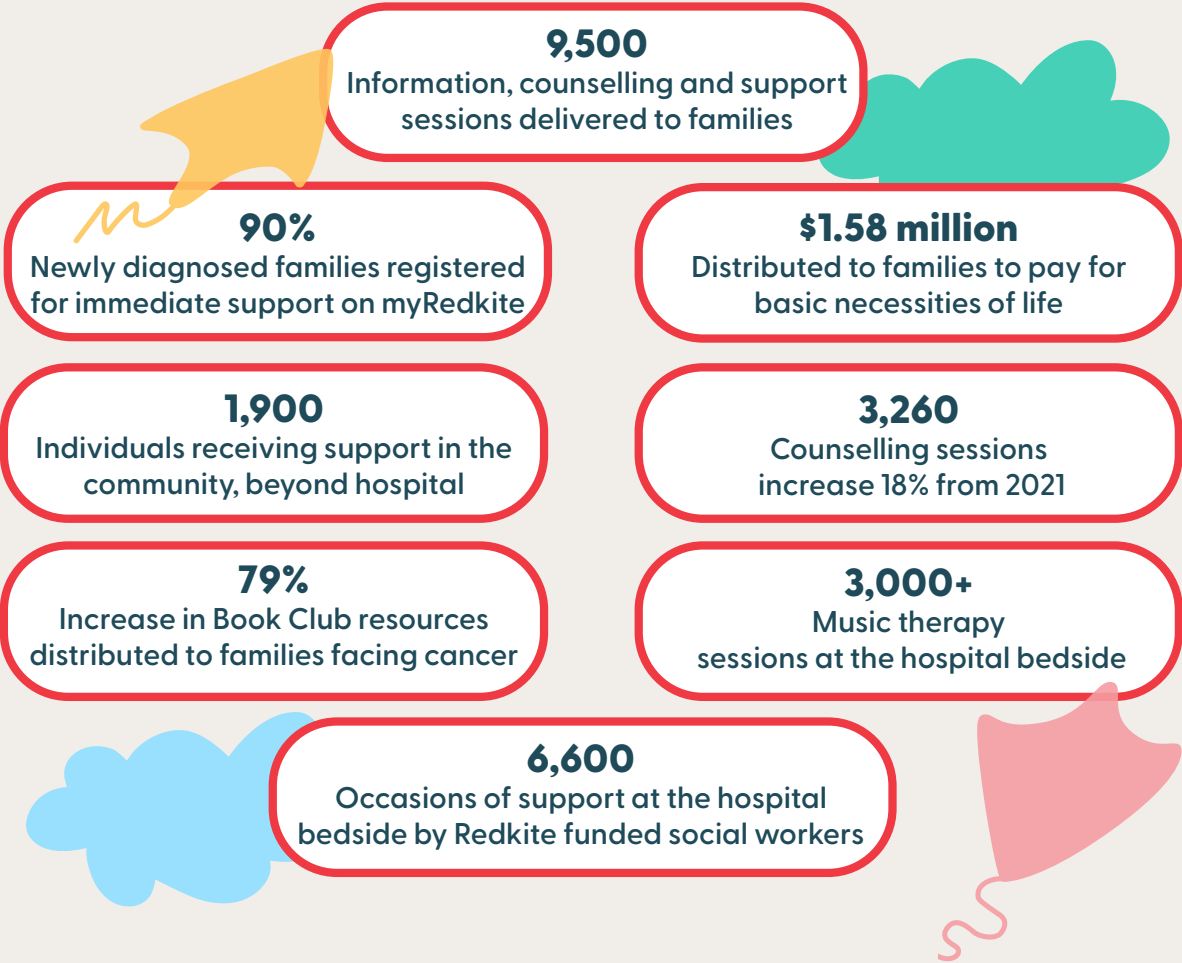
Redkite creates significant social and economic value through:

- broad and tailored psychosocial support that meets families needs through the whole cancer experience,
- outcomes that work together for greater benefit of families,
- improved financial resilience through the Financial Assistance Program and
- reducing the pressure on the healthcare system by generating significant benefits for the wider network of healthcare stakeholders.

**\$1 = \$4**

*For every \$1 invested in Redkite = \$4 of social and economic return is created for the community.*

# OUR IMPACT IN 2022



## All thanks to...

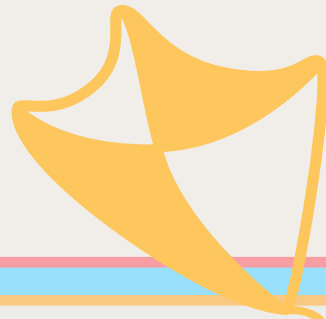
Our incredible supporters who have made it possible to offer more counselling, psychosocial support, financial support, resources, and information to families facing childhood cancer in 2022.

Because of your generosity we were able to raise over \$12 million, and that money has been used to continue providing families with high quality in-hospital and community-based programs.



## New Programs Launched in 2022

Our 2021 landmark report, *The Hidden Health Crisis: Children's cancer needs more than medicine*, identified key gaps in family support, and in 2022 Redkite launched a variety of initiatives to address those gaps.



### Children's Counselling and Group Support

According to our report, the majority of children with cancer did not receive the necessary emotional and mental health support at diagnosis, during treatment (52%) or following treatment completion (69%). For their siblings, 61% experienced issues at diagnosis and 60% after treatment was finished.

Redkite's children's counselling service was launched in mid-2021 and promoted at a larger scale in 2022. Of the 100 children who received counselling, 63% were siblings and 37% the diagnosed child.

In September 2022, Redkite launched a new group counselling program for siblings, Kite for Kids. This group brought together siblings aged between 6-10 years old once a week for six weeks to talk about different aspects of their mental health, including self-esteem, the challenges they're facing and coping with "big feelings". Due to the popularity of the program, three groups were run concurrently for 21 siblings. In 2023, we are aiming to expand the delivery of children's counselling and Kite for Kids.

### JobAccelerator, Powered by Hudson

When a child is diagnosed with cancer, it is common for parent's careers, job and income to be significantly impacted. Often one parent reduces their hours or stops working to care for their child in the hospital, while another takes on the full financial responsibility of the household. This situation is even more difficult for single-parent and split families. This unexpected and unavoidable break in their career, as well as the impact of their child's cancer treatment, can have long-term impacts on their working lives and career prospects.

Thanks to the generosity of our corporate partner, Hudson, families now have free access to JobAccelerator, an online education program and one-on-one coaching service to help them re-enter the workforce, switch industries, or restart their careers. The program was launched in July 2022 with 15 parents initially supported.

## Cancer Hub

As part of the newly formed Child & Youth Cancer Alliance, Canteen, Camp Quality and Redkite are working together to improve access to holistic support for families impacted by cancer who have children aged 0-25.

This very important Alliance has led to the establishment of Cancer Hub, which aims to streamline the way that families get support in the community. Cancer Hub is one contact point where skilled navigators actively assist family members to access whatever practical and emotional support they need throughout their cancer experience, be it from the Alliance partners, other state and national charities, government departments or third-party support providers in the community.

The Minister for Health & Aged Care, The Hon Mark Butler MP, launched Cancer Hub in July 2022 calling it "a milestone moment in cancer support".

Cancer Hub is a ground-breaking first step in the partnership between Canteen, Camp Quality and Redkite. We look forward to an ongoing collaboration where we share our expertise and resources together to make life easier for families impacted by cancer.

## KiteCrew App

Life doesn't stop when a child has cancer. Keeping up with life's daily chores and activities can be next to impossible. KiteCrew turns "let me know how I can help" into practical support. KiteCrew is a simple app that organises all the practical support families need from friends and family who want to help.

The KiteCrew App lists and shares tasks that the families' support network can help them with, like walking the dog, helping with school pickups, or doing the laundry. It can be hard to ask for help, but KiteCrew makes it easier. Since its launch almost 200 family networks have been created.



The Hon Mark Butler MP, Minister for Health and Aged Care, launched Cancer Hub in July 2022.

# FAMILY WELLBEING + TRANSITION PROGRAM

Supporting children and  
families during their time  
in the hospital



Lencia, diagnosed with leukaemia at 3 years old, with Family Wellbeing and Transition Coordinator, Jessica.

We know that a child's diagnosis, and the often long and traumatic treatment that follows, put enormous pressure on families. However, we commonly hear from parents that leaving the hospital and returning home when treatment ends can be the hardest transition to cope with.

**Redkite has been delivering the Family Wellbeing and Transition Program at The Children's Hospital Westmead for 7 years and in 2022 we launched the program at The Royal Children's Hospital Melbourne.**

The program equips families with the tools and resources they need for their mental health and wellbeing while in the hospital and prepares them for the transition home. The program is managed by a Redkite Family Wellbeing and Transition Coordinator. Our coordinator works alongside the hospital social work team and is a key support contact for families and can be accessed the moment a family steps onto the ward.

Jessica, the Family Wellbeing and Transition Coordinator at The Children's Hospital at Westmead, explains the impact her role has on families facing childhood cancer. "Along with connecting families to Redkite's services, an important part of my role is to give families the space to feel whatever it is that they are feeling," says Jess.

"Sometimes they cry and I sit with them while they're having their big emotions about the really scary cancer journey that they're on. I bring a listening ear and space to talk on the hard days or a conversation about

something other than cancer, to take their mind off everything going on." The Family Wellbeing and Transition Coordinators are people that can lean on during their time in the hospital. They are a source of practical information, emotional support and actively connect families with the assistance they might need.

Marie and her daughter, Lencia, met Jess when Lencia was diagnosed with leukaemia at three years old.

***"Jessica has been so important to us. It's the first time we have experienced this kind of help before, even at home in New Caledonia we never had help like this."***

***- Marie, Mother of Lencia***

"The program made a massive difference, we didn't feel isolated as a family, we got to know people around the hospital, and we could actually relax. The extra support really makes a difference. Jessica takes the time to listen and wants to know if we need anything. She has supported us a lot in difficult times."

Redkite has plans to further expand the Family Wellbeing and Transition Program across the country and continue to work in partnership with the hospitals to ensure families have all the support they need for their wellbeing and on transition home.



**Hammond Family**  
Five-year-old Joshua was diagnosed with leukaemia in 2020.



# MYREDKITE PORTAL

Immediate access to vital financial assistance

The financial burden of childhood cancer on Australian families is devastating. In 2022, Redkite assessed over a thousand families requests for financial assistance. Results showed 70% of these families said they were unable to pay a utility bill on time, 33% could not pay car registration or insurance on time and 9% told us they regularly went without meals.

Now, with such extreme rises in the cost of living and at a time when parents often need to stop work to care for their sick child, the financial support Redkite provides has never been more critical.

The myRedkite portal allowed us to reach around 90% of newly diagnosed families to ensure immediate connection to Redkite critical support. In 2022, over \$1.58 million in financial assistance was provided to over 1,500 families Australia-wide.

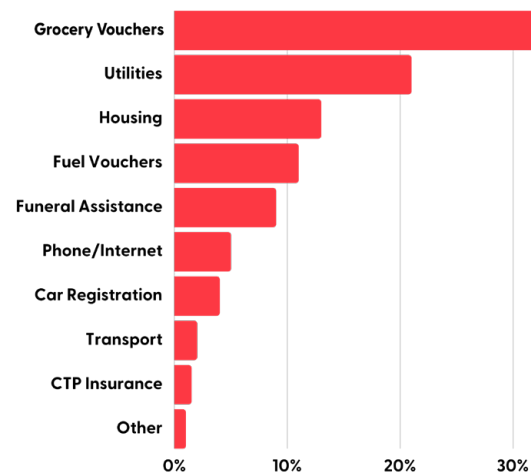
Katie is one of the thousands of parents who have received Redkite's essential support services, following her son Josh's diagnosis with leukaemia at just five years old. "I don't know about most families but usually, you have just enough money to pay the huge bills before you start scrambling again. While Josh was receiving treatment, we experienced really difficult financial times, so having Redkite's fuel and groceries vouchers was a huge relief," shares Katie.

"Receiving that help means one less thing to worry about. You can just relax that bit more, even if it's only for a second. We did have a moment where I was thinking, "I don't know how we're going to do this. I'm going to have to ask mum to buy my groceries.

"It was hard finding the vulnerability and courage to ask for help. It was really frightening. And so I did finally find a way to ask Redkite for help and they covered two of our car regos and our bill electricity and phone bill."

## 2022 Financial support spendings

These numbers show a significant need for assistance with such basic necessities of life.



**"I had been living, not day to day but hour to hour in the thick of it. Redkite's assistance was the difference between saying, "I can't go on," and actually moving forwards."**

- Katie, Mother of Josh



# MUSIC THERAPY PROGRAM

Using music to build resilience



Matt  
Redkite Music Therapist

Music therapy has a huge impact on the overall wellbeing of children undergoing cancer treatment and their families.

Music transcends all areas of a child's life and plays an important role in helping children and their families learn how to cope with often traumatic experiences. It also plays a critical role in maintaining the cognitive, emotional, social, and physical needs of children who often miss out on years of early education and skills development due to their cancer treatment.

In 2022, Redkite funded music therapists at seven paediatric hospitals across Australia.

**We provided over 3,000 support sessions to children and families on cancer wards and clinics and supported over 380 new patients.**

Often, children undergoing treatment are bombarded with medical information and procedures, which can be difficult to comprehend and process. Music therapy provides a creative outlet for children to engage in and enjoy, allowing them to feel a sense of normalcy and control amidst stressful medical experiences.

Redkite Music Therapist 'Music Matt', as he is known to the families, is a registered Redkite Music Therapist who has been providing music therapy services at Sydney Children's Hospital, for 10 years. He is passionate about the impact music therapy has on the wellbeing of all families facing childhood cancer.

"If you were to take away music therapy from the care domain, you would be removing a huge source of support and strength for families," Matt explains.

"Music therapy provides opportunities for movement, coordination, and fine and gross motor skills development. We don't ask patients to kick a football or go swimming, we meet them where they are and ask them to do what they can. Clapping, stamping, shaking or singing."

"Music therapy continues to demonstrate its efficacy in promoting positive experiences and relationships in children with cancer. Just last week a young girl who suffered a bleed on her brain and couldn't walk, experienced a remarkable improvement in her physical condition after months of physiotherapy supported by music therapy. Through a therapeutic relationship and singing together for months we developed a strong relationship. This supportive relationship fostered her progress, culminating in the achievement of a significant milestone, namely taking her first steps months later. Which we, of course, celebrated through song."

**"The in hospital music therapy provides a positive and supportive space for children to express themselves, explore their emotions and build resilience."**

**- Matt, Music Therapist**



**Rose and Lily**  
Rose was diagnosed with  
anaplastic large-cell lymphoma  
in May 2020



# CHILDREN'S COUNSELLING

## Finding hope and healing

A childhood cancer diagnosis affects the entire family and can have a particularly traumatic effect on the diagnosed child and their siblings' mental health. This is why Redkite's children's counselling, facilitated by Redkite specialist paediatric oncology community Social Workers, is so impactful.

Our research shows that more than half of families going through their children's cancer, experienced gaps in mental health support for their children. Redkite facilitates this support through our children's counselling services and dedicated online Connect Groups for children called Kite for Kids.

Redkite's children's counselling is safe space and offers age appropriate activities where diagnosed children and their siblings can talk about their feelings and experiences.

Cass started using Redkite's children's counselling for her twin daughters, Rose and Lily, in June 2022. Rose was diagnosed with anaplastic large-cell lymphoma in May 2020 at three years old which meant Cass and Rose were split from their family while Rose was on treatment. When Cass and Rose returned home, six months later, Cass started to notice both Rose and her twin sister Lily had separation anxiety, trouble sleeping and were showing signs of aggression.

"The girls were both very shy and scared to leave me", Cass remembers. "Rose was extremely scared to be separated from me. I couldn't do anything; I couldn't walk downstairs without her having to be with me. I couldn't leave the house without telling her." Rose and Lily had individual weekly counselling sessions with Redkite Social Worker, Katja, via Zoom for three months. It only took a few sessions before Cass started to notice positive changes in Rose and Lily's behaviour.

"I didn't expect to see such dramatic changes," recalls Cass. "I wasn't expecting them to engage as well as they do. Because they're both quite high-energy, so keeping them entertained and focused is hard work. The girls love talking to Katja."

**Due to the contributions from our supporters in 2022, we were able to increase our direct counselling support services by 19% from around 470 individuals in 2021 to 560 in 2022. Of these, 100 (18%) were diagnosed children and siblings.**

For Rose, Lily and the other children who participate in Redkite's children's counselling, the impact is critically valuable to their mental health and wellbeing. Each session is filled with activities to and provides an opportunity for children to learn new skills and meet others going through a similar experience.

**"Throughout the sessions, the children learn that their feelings are normal and that they're not alone. This discovery is very powerful and important. We talk, share and learn coping strategies and we adapt our approach depending on children's age, interests and stage of development".**

**- Katja, Social Worker**



# OUR THANKS

At Redkite, we place tremendous value on our relationships with individual supporters, foundations, and corporate partners. We can only do our work because of you.

Your generosity helps us provide emotional and mental health support, financial assistance, and practical resources to people whose lives are turned upside down by childhood cancer. Redkite's Impact Report allows us the opportunity to recognise our most generous donors in the 2022 financial year.



We also acknowledge and send our sincere gratitude to those who have elected not to have their names published.

## Major Donor Recognition

### MAJOR DONORS

- Corio Foundation
- Denton Family Trust
- Flannery Foundation
- Grant and Linda Levy
- Hooper Shaw Foundation
- Johanna Sewell Memorial Fund
- Norman Brunsdon AM
- Robert Albert AO
- Ruth Armytage AM
- Susan Maple-Brown AM
- The Karen and John Kightley Foundation
- William Cant
- Willy and Mimi Packer

### GIFTS IN WILLS

- Estate of the late Mona Lee
- Estate of the late Roger Hamilton



### TRUSTS & FOUNDATIONS

- |  |  |
|--|--|
| William Angliss (Victoria) Charitable Fund | The Kinghorn Foundation                                  |
| Pierce Armstrong Foundation                | James N. Kirby Foundation                                |
| Ronald Geoffrey Arnott Foundation          | Liangrove Foundation                                     |
| ATS Charitable Foundation                  | Lyone Foundation   |
| M. Attwood Testamentary Trust              | Massey Charitable Trust                                  |
| Brady Cancer Support Foundation            | Norman, Mavis & Graeme Waters Perpetual Charitable Trust |
| Channel 7 Telethon Trust                   | Opalgate Foundation                                      |
| Collier Charitable Fund                    | Stan Perron Charitable Foundation                        |
| Farrell Family Foundation                  | Savannah Foundation                                      |
| Marian & E.H. Flack Trust                  | Shaw and Partners Foundation                             |
| Maisie Gallie Benevolent Fund              | J.P.Stratton Trust                                       |
| The Gross Foundation                       | Thyne Reid Foundation                                    |
| Ernest Heine Family Foundation             | Joe White Bequest  |



## Partner Highlight

### Coles & Coles Express

In 2022, Redkite celebrated nine years of partnership with our Premier Partners Coles and Coles Express, who have raised over \$49 million for families facing childhood cancer since the start of our partnership in 2013.

The passionate Coles team members continued to make a significant and meaningful difference by donating 5c from the sale of every specially marked loaf of Coles Brand bread, Christmas cookies, Pane di Casa, in store fundraising activities and going the distance with local fun runs across the country.

Through Redkite fundraising weeks at Coles Express the team members went above and beyond, inspiring customers to round up their purchases or make a donation during the Redkite Week. The team members across Australia raised an incredible \$2.1 million for families facing their child's cancer.

The Redkite and Coles Dare to Dream Scholarship continued to make a difference for young cancer patients and survivors. In 2022, 140 applications were received. We awarded scholarships to 40 young people impacted by their cancer diagnosis, to help them fulfil their dreams and aspirations and build their future.

## Premier Partners

**coles** **coles**  
express



## Partner Spotlight

### MPA doubles donations for the Redkite Christmas Appeal

Long-term partners MPA, generously doubled donations in Redkite's Christmas Appeal and helped ensure that Redkite reached as many families as possible at Christmas.

MPA's generous support meant that every \$1 donated during the match-giving period became \$2, doubling the impact of Redkite supporters.

***"We are incredibly proud to continue our partnership with Redkite, particularly at this time of year when they offer much-needed support for families facing cancer. At MPA we are committed to making a positive contribution to our community, and with our long-standing relationship with Redkite we look forward to creating a lasting impact."***

*-MPA Managing Director, Ed Singleton*

## Major Corporate Partners



**COUNTRY ROAD**



**mpa**

BUILDING  
GENUINE  
PARTNERSHIPS







Our flagship event the Redkite Quiz, returned to Brisbane and Melbourne in 2022. After a two year hiatus without in-person events, we were delighted to be able to safely bring our supporters back together to network, play trivia, and raise vital funds in support of Redkite families.

The Quiz is an evening of friendly rivalry and community spirit, featuring games, sparkling auction prizes and a buzzing social scene. The two events raised a combined total of more than \$665,000 to propel Redkite's work in each state, a result that would not have been possible without the support of our sponsors.

Redkite appreciates the generosity and leadership of event sponsors BOC, Canaccord Genuity, Crisp Ideas, Joval Wines, Mayne Pharma, MPA, Print Media Group, Abacus Rent It and all those who supported the event through table purchases, prizes and donations.



— IN 2022 —  
**REDKITE QUIZ EVENTS RAISED  
MORE THAN \$665,000  
FOR FAMILIES FACING CHILDHOOD CANCER**





## Community Support

2022 saw Redkite hold its first ever Facebook fundraising challenge. 50 Crunches a Day Challenge in March had over 5,000 people join our Facebook group and over 1,200 registered to fundraise for Redkite.

The Facebook group created an online community that allowed people to support each other in the challenge. It offered a safe environment where participating families could speak openly about their experiences using Redkite's services with other fundraisers and discuss how it impacted their lives. The 50 Crunches a Day Challenge brought in more than 4,500 donations, totalling over \$166,000 to support Redkite families.

The Sun Up Challenge made a triumphant return in 2022, raising \$183,500 thanks to the efforts of our amazing fundraisers who walked over 41,000 km in support of Redkite.

A big thank you to Max Denton and the Denton Family Trust for providing an extraordinary gift of \$30,000 to match gifts made by the Sun Up Challenge community dollar for dollar: doubling their impact.

Thank you to the thousands of community members who raise critical funds for Redkite to ensure families receive the essential support they need.

## Sydney Swans Helping launch KiteCrew

Redkite and the Sydney Swans have been proud partners for 22 years and this year, the Sydney Swans helped create an ad to launch our new family support app, KiteCrew.

Sydney players Harry Cunningham, Isaac Heeney, Will Hayward and Oliver Florent jumped at the chance to be the family's 'crew', to show how easy KiteCrew makes allocating and completing household chores.

Read more about the KiteCrew app on page 12

*"We know how important teamwork is, especially when a child has cancer. We love that KiteCrew enables families facing childhood cancer to build their support crew and ask for the right help at the right time."*

**- Redkite Ambassador & Sydney Swans player, Harry Cunningham**





## A Lifetime Legacy

### The Hamilton Family

The story of the Hamilton family exemplifies the generosity and commitment of Redkite's supporters without whom our work would not be possible.

The late Roger Hamilton SC, a former Senior Member of the NSW Civil and Administrative Tribunal, was an original trustee of the Malcolm Sargent Cancer Fund for Children (now known as Redkite), author of the original Trust Deed, Chairman of the Board between 1994 and 1998, and NSW Regional Council Member from 2005.

When Roger sadly passed from cancer in October 2021, he left Redkite a bequest in his Will, and his family carry on his legacy. Susan, Roger's wife, continues to make regular donations to Redkite on behalf of the family and advocates for the charity's work in the community. Susan and Roger's four children have also taken on various roles, with James and Nallah stepping up to serve on Redkite's Regional Council, Marcus

advocating where he can, and Claire has been a regular volunteer at Redkite events. We are deeply indebted to the Hamilton family for all they have done, and continuing Roger's legacy by passionately and generously supporting families facing childhood cancer.

**You too can leave a legacy like Roger and the Hamilton Family. Through a gift in your Will, you'll help continue Redkite's vital emotional, practical and financial support in the years to come – wherever families live and for however long they need us.**

**For more information call Cheryl, our Gifts in Wills Specialist, on 02 9219 4015 or email [ckirgan@redkite.org.au](mailto:ckirgan@redkite.org.au)**

## Message from our Chair

### Mark Rigotti

What a successful and challenging year it has been for Redkite, with so many new and exciting activities. Over the past year, we have improved the lives of thousands of children and their families.

Redkite has been able to offer a variety of financial, emotional and practical support services that have supported thousands of families living with childhood cancer because of your support generosity.

While navigating the COVID-19 pandemic and the unprecedented challenges it continued to present in 2022, we also took advantage of the chance to develop as an organisation. I am incredibly proud of the determination displayed by our community, and by the courage and unwavering commitment of the team and supporters to improve the lives of families facing childhood cancer.

Our strategic plan is ambitious and in 2022 we made significant progress towards our 2026 targets. It is thanks to our supporters and partners that we've been able to introduce new groundbreaking services and form new partnerships, allowing us to work towards closing the gaps in support. But there is a lot that still needs to be done. At Redkite, we recognise the value in working together with our business and philanthropic partners to create greater impact and to transform cancer care services for children and their parents. I welcome you all to join us in this life-changing work.

- Mark Rigotti, Redkite Chair

*Mark Rigotti*





# BOARD OF DIRECTORS

2022 – 2023



**Mark Rigotti**  
Redkite Chair

Mark is the Managing Director and CEO of the Australian Institute of Company Directors. He is the Immediate Past Global CEO of Herbert Smith Freehills and has more than 20 years of senior executive experience.



**Georgie Gardner**  
Board Member

Georgie Gardner is one of the country's best-known and most popular television news presenters, anchoring Nine's 6.00pm Sydney news bulletin on Friday and Saturday nights as well as doing special news reports midweek.



**A/Prof. Christopher Milross**  
Board Member

Chris brings a hugely valuable oncology perspective to our Board with more than 30 years of experience in clinical oncology as a specialist radiation oncologist. Chris trained and worked at The Prince of Wales Hospital, The MD Anderson Cancer Centre in Texas and the Royal Prince Alfred Hospital.



**Dr Brian Murphy**  
Board Member

Brian has over 20 years of experience in strategy and management consulting at Bain & Company. He leads Bain's Energy and Natural Resources practice across the Asia-Pacific region, advising clients globally on strategy, technology, performance transformation, and mergers and acquisitions.



**Stephen Conry AM**  
Board Member

Stephen Conry AM is a Company Director. He is the former CEO of JLL, retiring from the firm in 2022 after 13 years as CEO and 33 years as a Director. He has served on various business and community boards and committees.



**Joost de Kock**  
Board Member

Former Deputy Secretary of Customer Strategy and Technology at Transport for NSW, Partner & Managing Director of the Boston Consulting Group. For over three decades Joost has worked across the private and public sectors focused on strategy, technology, business model innovation and transformation.



**Jonathan Dooley**  
Board Member

Jon brings over 30 years of accounting experience and is considered an expert and pioneer in his field of forensic accounting. He founded Vincents, a financial and economic advisory firm in 1991 and is currently their Executive Chair.



**Alex Scandurra**  
Board Member

Alex Scandurra is an influential player in the start-up world as a former CEO of Stone and Chalk. Alex is also the Founding Director of FinTech Australia and sits on the ASIC Digital Advisory Committee and the Advisory Board to the NSW Dept of Finance, Services & Innovation.




**Deanne Stewart**  
Board Member

Deanne joined Aware Super as Chief Executive Officer in 2018. Deanne has more than 25 years of leadership experience in financial services in Australia and internationally. Before joining Aware Super, Deanne was Chief Executive Officer of MetLife Australia and held senior roles within BT Financial Group.



**To learn more about our Board Members, please scan the QR code above.**



***“We were midway through Riley’s treatment and his dad suddenly passed away. We went from a two-income family, to a one-income family, to a no-income family. Some days all I could do was put one foot in front of the other. That’s when Redkite stepped in and helped me pay the bills, keep food on the table and offered counselling and mental health support. Receiving help from Redkite meant the world and I wouldn’t be where I am today without their support.”***

***- Tammy, Mum of Riley,  
who was diagnosed with leukaemia aged seven***

**Thank you for being part  
of our mission to ensure  
there is always a lifeline  
for families facing  
childhood cancer.**





***“Redkite made us think wow, there are people out there that are actually thinking about these things. Redkite understands that parents might not have a job anymore and need financial help, counselling and mental health support, and help to get back to work. Redkite as an organisation is amazing and we couldn’t have made it through without them.”***

- Carien, Mum of Joshua was diagnosed with brain cancer at age four.

📞 1800 REDKITE    ✉ [info@redkite.org.au](mailto:info@redkite.org.au)    🌐 [redkite.org.au](http://redkite.org.au)

## **Redkite 2022 Impact Report**

