

# Wynnum Herald

Wednesday, March 24, 2010 [wynnumherald.com.au](http://wynnumherald.com.au)



Eye-to-eye with an owl in need

>>SEE OUR GALLERY AT [WWW.WYNNUMHERALD.COM.AU](http://WWW.WYNNUMHERALD.COM.AU)



Wheel good fun – PAGE 8

>>[WWW.WYNNUMHERALD.COM.AU](http://WWW.WYNNUMHERALD.COM.AU)

## Novices on deck with sail in sight

A GROUP of city corporates is preparing to set sail on the adventure of a lifetime.

Twenty-three women – all novice sailors – will take to the helm of the Manly-based *South Passage*, a 100ft gaff-rigged schooner, for the 300 nautical mile Brisbane to Gladstone Yacht Race.

This year's event, set to raise money for children's cancer charity Redkite, starts from Shorncliffe on Good Friday and finishes on Easter Sunday.

Aided by seven highly skilled mentors, including a skipper, sailing master, navigator and cook, the novice crew will face the elements during all phases of the journey.

Views from the boat will be shown live on [www.svs.video.tv](http://www.svs.video.tv).

■ Visit [www.everydayhero.com.au/WomenRace4\\_Redkite](http://www.everydayhero.com.au/WomenRace4_Redkite).



AYE, AYE CAPTAIN: Crew members (from left) Donna Smith, Diane Halden and Yvonne Hayes.

Picture: Richard Walker

# Land on steep rise

By JAMES BRINDLEY

LAND valuation has skyrocketed in the Redlands and rate rises may follow.

Land values released yesterday by the Department of Environment and Natural Resources showed overall values in the Redlands jumped 35 per cent, but rises were highest in Mt Cotton with a leap of 74 per cent,

## Redlands face increase in rates

followed by Alexandra Hills and Capalaba (50 per cent), Birkdale and Amity (34 per cent) and Cleveland (21 per cent).

Valuations were more conservative in the bayside's Brisbane City Council sub-

urbs, with Wakerley topping the list with a 20 per cent rise. Wynnum West values rose 13 per cent, Wynnum 8 per cent and Manly 4 per cent.

Harcourts principal Garry Ahearn said value increases

resulted from more buyers overcoming the financial crisis and entering the market, compounded by a lack of properties.

"During the crisis the banks wouldn't lend money; there was a shortage of

funds and development was a high-risk option," Mr Ahearn said.

He predicted southeast Queensland prices would continue to increase because of pent-up demand, which would be outstripped

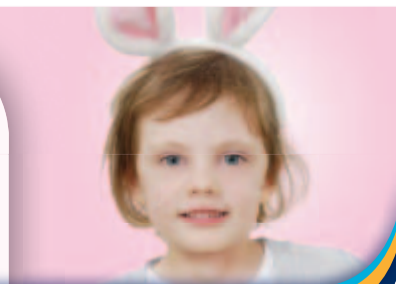
by supply for "a long time".

Mr Ahearn said the Redlands lifestyle, easy road access to the city and quality schools, shopping centres and facilities made bayside properties popular.

The owner of Cleveland Real Estate Agency said the increased valuations would make buying a first home on the bayside impractical.

■ To page 5

The Easter Bunny is here on Easter Saturday  
Saturday 3rd April between 10am and 1pm



wynnum rd wynnum • ph 3396 0000 • [www.wynnumplaza.com](http://www.wynnumplaza.com)

more than you'd expect